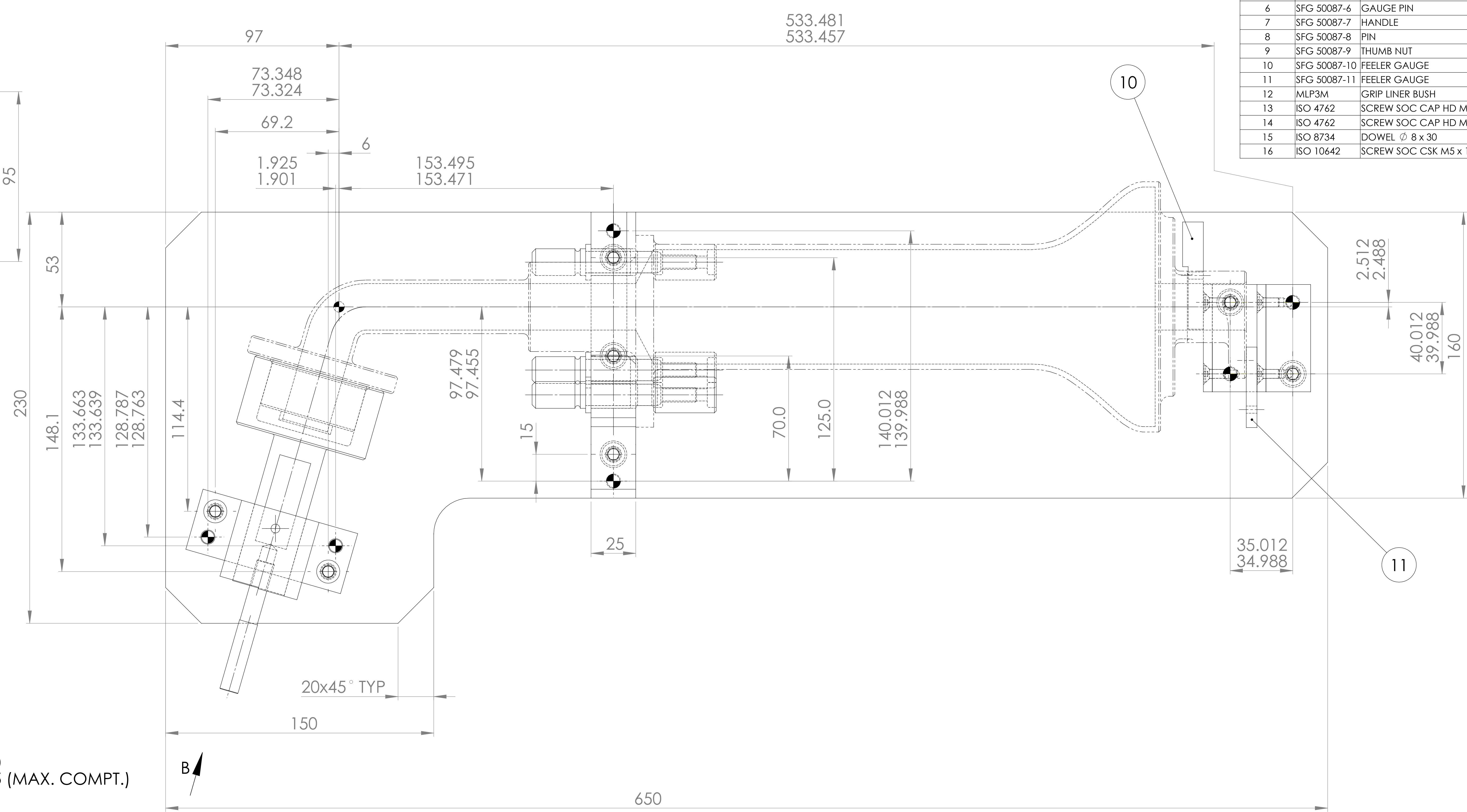
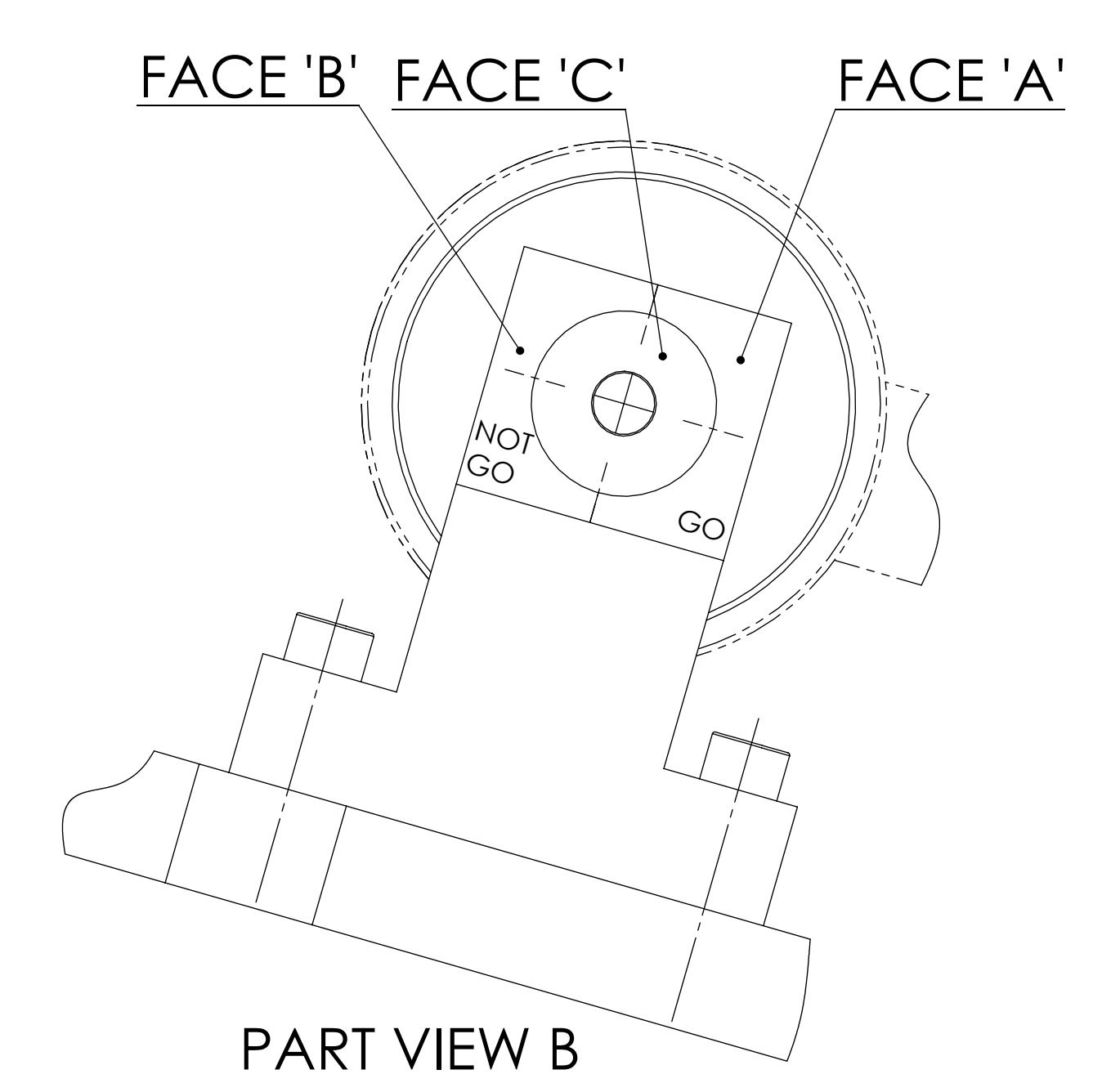
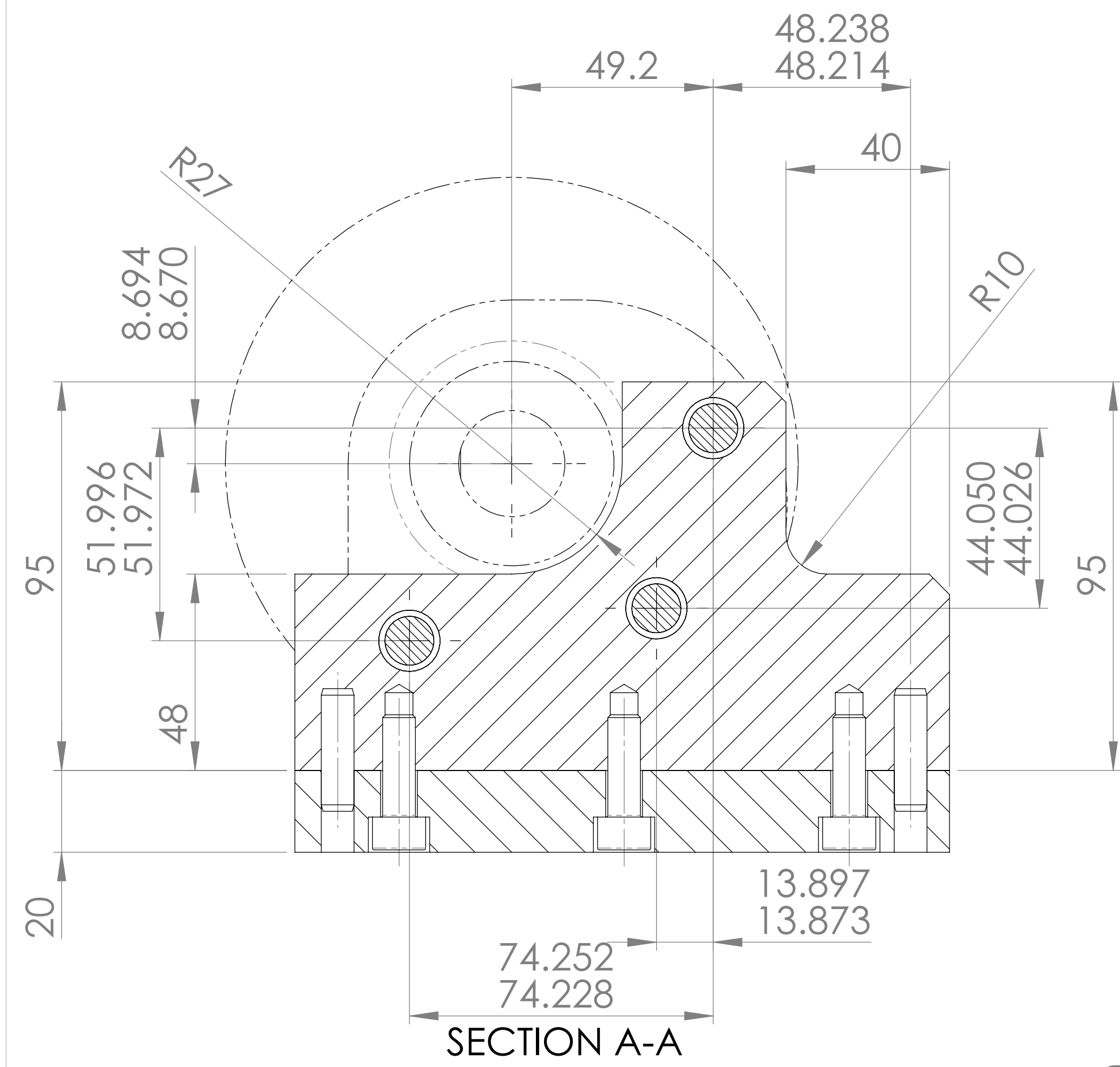
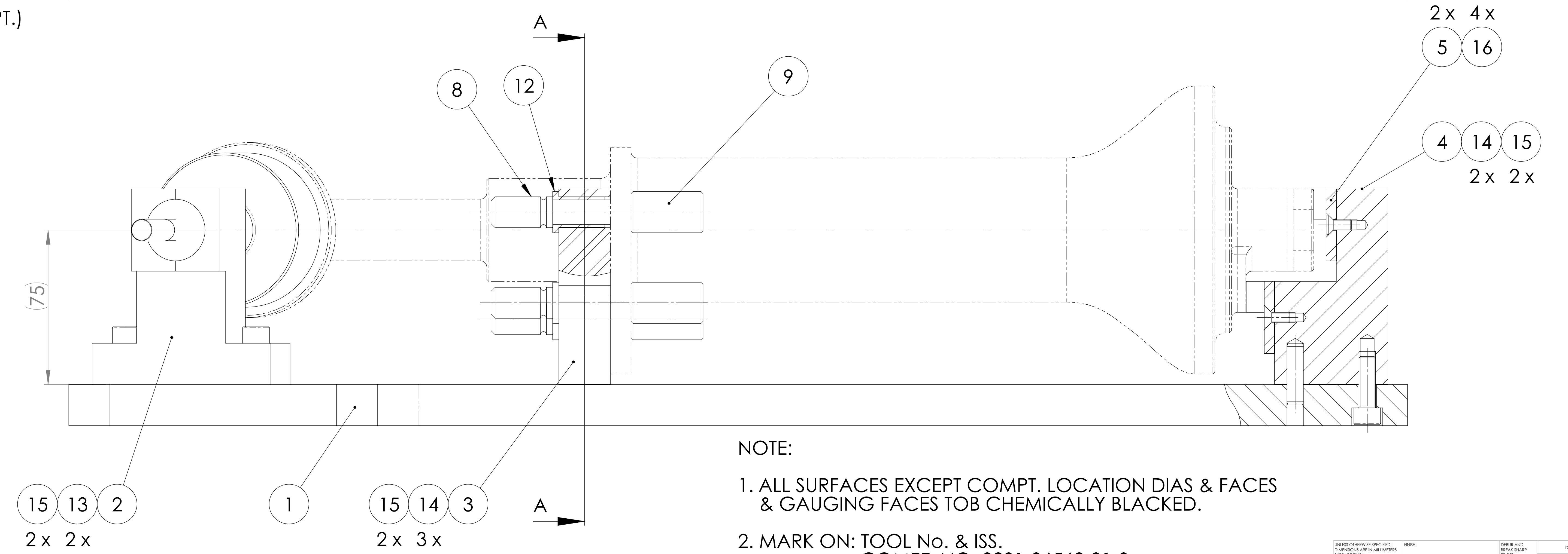
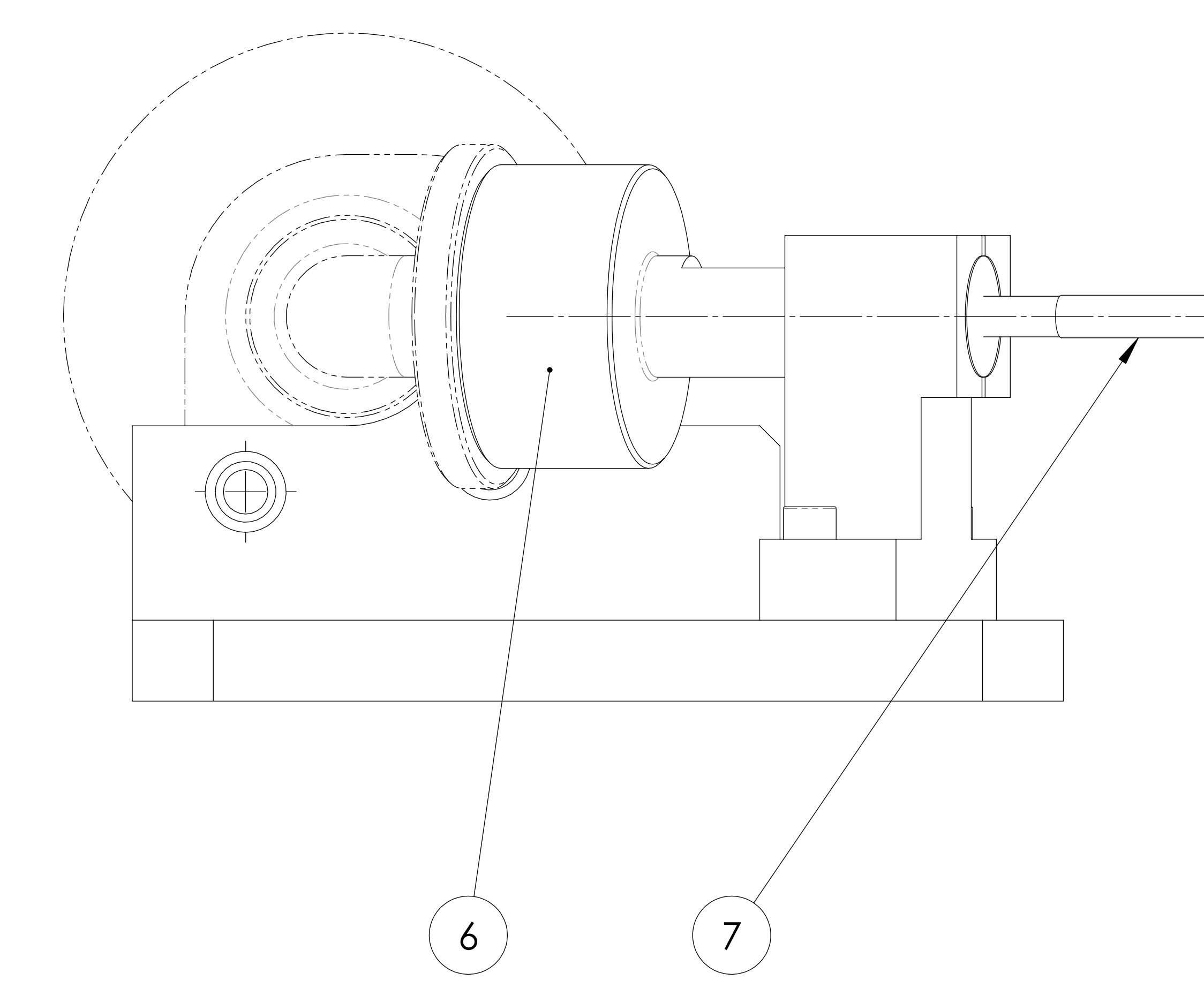


ITEM NO.	PART NUMBER	DESCRIPTION	MATERIAL	QTY.
1	SFG 50087-1	BASE	M.S.	1
2	SFG 50087-2	BLOCK	C.H.M.S.	1
3	SFG 50087-3	SUPPORT	M.S.	1
4	SFG 50087-4	BLOCK	M.S.	1
5	SFG 50087-5	PLATE	G.P.	2
6	SFG 50087-6	GAUGE PIN	C.H.M.S.	1
7	SFG 50087-7	HANDLE	M.S.	1
8	SFG 50087-8	PIN	C.H.M.S.	3
9	SFG 50087-9	THUMB NUT	M.S.	3
10	SFG 50087-10	FEELER GAUGE	G.P.	1
11	SFG 50087-11	FEELER GAUGE	G.P.	1
12	MLP3M	GRIP LINER BUSH	B.O.	3
13	ISO 4762	SCREW SOC CAP HD M8 x 35	STK.	2
14	ISO 4762	SCREW SOC CAP HD M8 x 25	STK.	5
15	ISO 8734	DOWEL $\varnothing$ 8 x 30	STK.	6
16	ISO 10642	SCREW SOC CSK M5 x 12	STK.	4



NOTE:  
 WHEN FACE 'A' & FACE 'C' ARE FLUSH DIMN 'X' = 39.350  
 39.325 (MAX. COMPT.)  
 WHEN FACE 'B' & FACE 'C' ARE FLUSH DIMN 'X' = 38.557  
 38.532 (MIN. COMPT.)



NOTE:  
 1. ALL SURFACES EXCEPT COMPT. LOCATION DIAS & FACES & GAUGING FACES TOB CHEMICALLY BLACKED.  
 2. MARK ON: TOOL No. & ISS. COMPT. NO. 3201-36562-01-0  
 3. GAUGE TOLERANCES TO BS 969:1982  
 4. SEE SHEET 2 FOR DETAILS NOT DIMENSIONED ON THIS SHEET.

DESIGNER: [ ]	CHECKED: [ ]	DATE: [ ]	SCALE: [ ]	SHEET NO: [ ]	TOTAL SHEETS: [ ]
ACCEPTANCE GAUGE			SFG 50087		